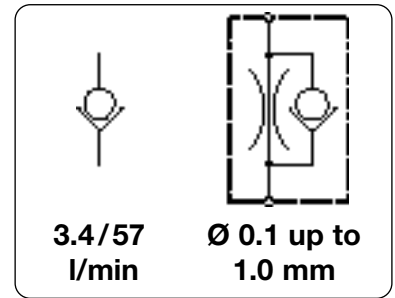


Check valve	The check valve permits flow in one direction only. A small check disc within the housing ensures free flow in one direction and at the same time seals off on the other side.	
Restrictor check valve	The restrictor check valve provides a constant flow in one direction, defined through the orifice size, and a flow of the full nominal size towards the other direction.	
Media	5 µm filtered compressed air or non-corrosive gases	
Diameter tolerance	-3% to +10% of nominal diameter	
Operating pressure	max. 0.7 bar at F2804-400/1/2/3,	max. 5.2 bar at F2804-404
Cracking pressure	< 20 mbar at F2804-400/1/2/3,	< 25 mbar at F2804-404
Temperature range	5 °C to 50 °C / 41 °F to 122 °F	
Material	Body: polysulphone at F2804-400/1/2/3, polypropylene at F2804-404 Check disc: Celcon® at F2804-401/2, silicone at F2804-400/3/4	



Dimensions A	Operating pressure	Check disk	Connection	Leakage rate	Flow rate	Nominal size	Order number
mm	max. bar	made of		< ml/min*2	l/min*1	colour / DN	

Check valve		operating pressure max. 0.7 / 5.2 bar			F2804		
12	0.7	silicone plain fittings Ø 2.4	3	3.4	red	1.5	F2804-400
		Celcon®	51		orange	1.5	F2804-401
		Celcon®	17		green	1.5	F2804-402
		silicone	3		blue	1.5	F2804-403
26	0.7	Celcon® fittings Ø 2.7	51	3.4	grey	1.5	F2804-401-B80
		Celcon®	17		grey	1.5	F2804-402-B80
		silicone	3		grey	1.5	F2804-403-B80
30	0.7	Celcon® fittings Ø 4.7	51	3.4	grey	1.5	F2804-401-B85
		Celcon®	17		grey	1.5	F2804-402-B85
		silicone	3		grey	1.5	F2804-403-B85
15	5.2	silicone 10-32"	1	57	grey	3.8	F2804-404
		silicone fittings Ø 2.7	1		grey	3.8	F2804-404-B80
		silicone fittings Ø 4.7	1		grey	3.8	F2804-404-B85

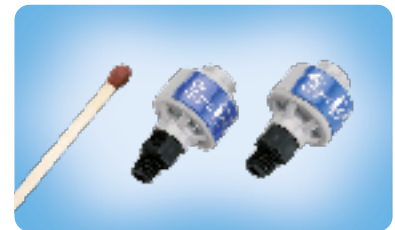


F2804-400 / 1 / 2 / 3 check valve



F2804-404 - B85 / ... - B80 check valve

Restrictor check valve		operating pressure max. 5.2 bar			F2804		
15	5.2	silicone 10-32"		0.10			F2804-404-041
				0.13			F2804-404-050
				0.15			F2804-404-051
				0.18			F2804-404-071
				0.25			F2804-404-101
				0.30			F2804-404-121
				0.41			F2804-404-161
				0.51			F2804-404-201
				0.64			F2804-404-251
				0.76			F2804-404-301
				1.02			F2804-404-401



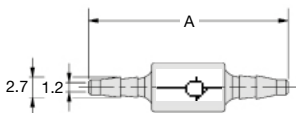
F2804-404 - 071 / -301 restrictor check valve

Special options, add the appropriate number

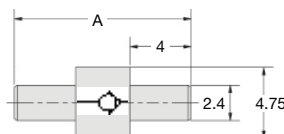
increased cracking pressure for check valve, with spring 35 mbar F2804-404-05

Accessories, enclosed

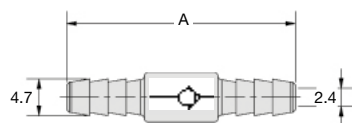
connecting nipple for F2804-404 10-32" / fitting Ø 2.7 F3120-80
Ø 4.7 F3120-85
Ø 5.6 F3120-86



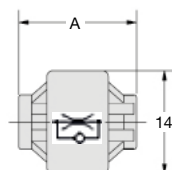
F2804-40.-B80



F2804-40.- with plain fittings



F2804-40. B85



F2804-404

fitting	for tube	
B80	Ø 2.7	1/16" Ø 1.6 mm
B85	Ø 4.7	1/8" Ø 3.2 mm
B86	Ø 5.6	0.17" Ø 4.3 mm

*1 at max. operating pressure *2 at Δp or P₁ = 70 mbar, at type F2804-404: P₁ = 5.2 bar

* Product group

PDF CAD
www.aircom.net



Order example:
F2804-400